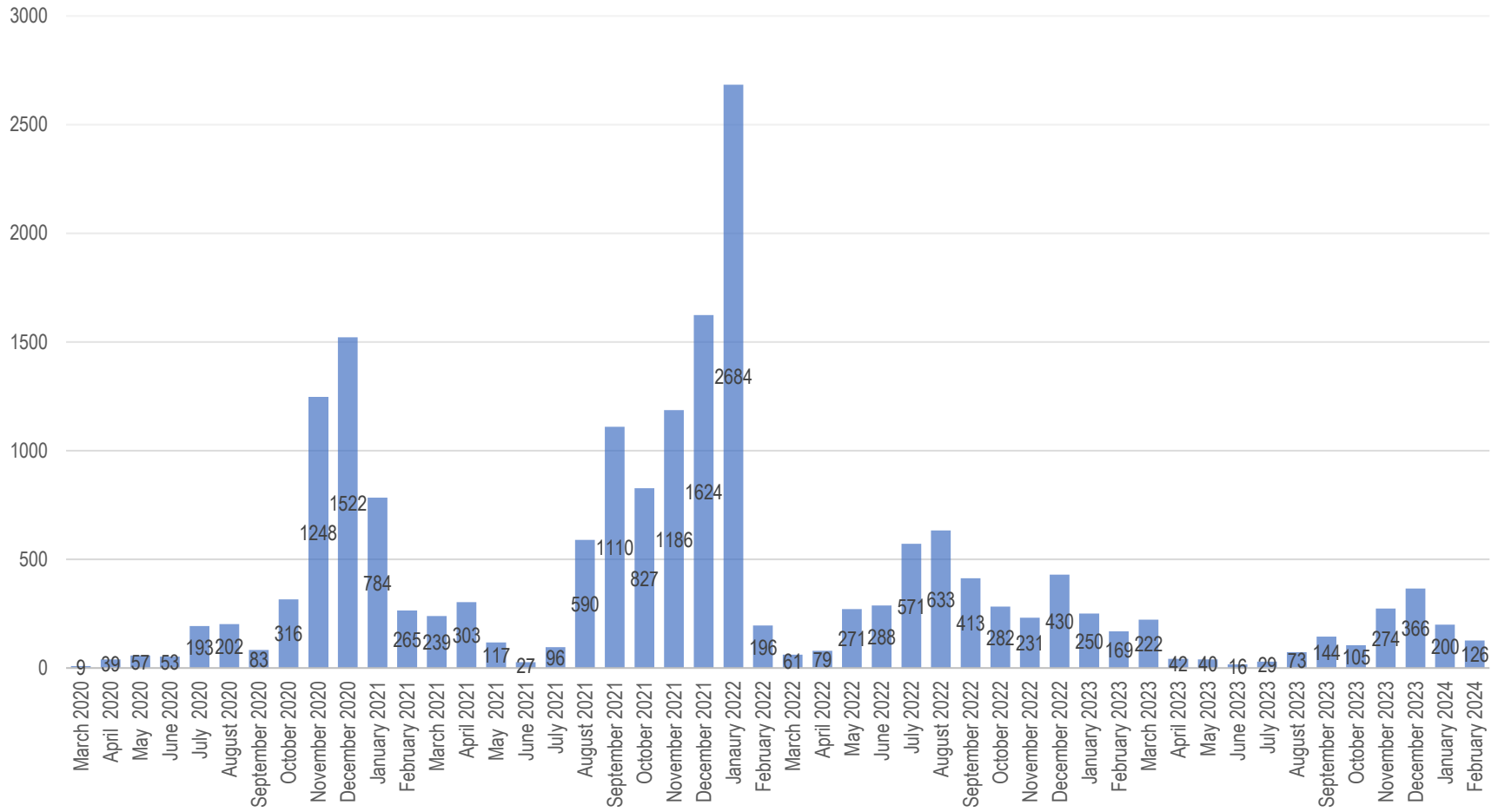
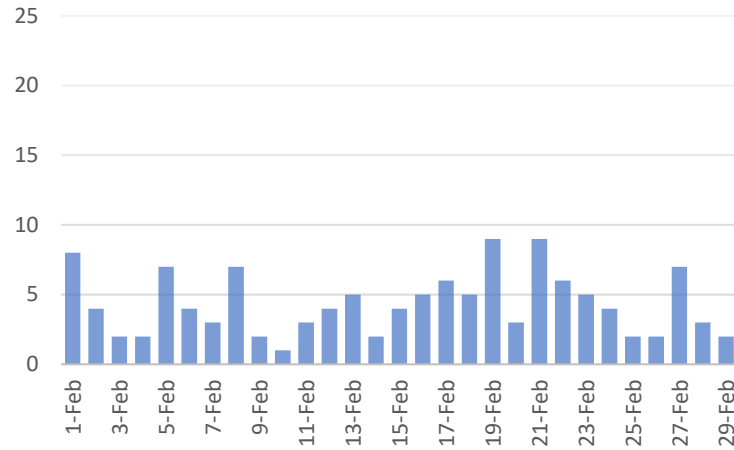


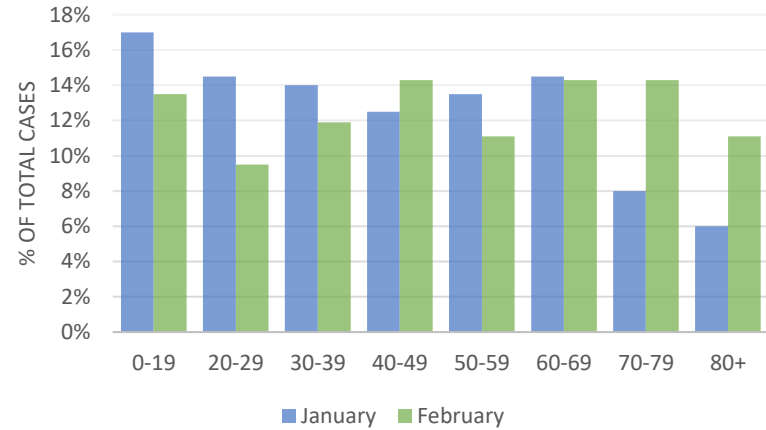
## COVID case counts **decreased by 37%** from January to February



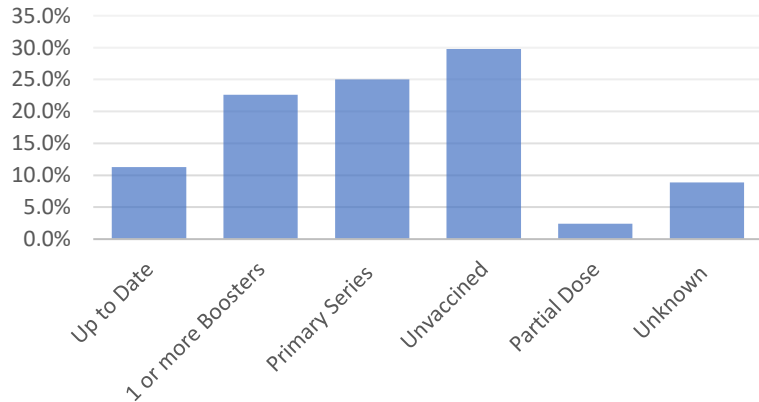
Daily COVID case counts **ranged from 1 to 9 cases per day** during February



Percentage of COVID cases **70 years and older increased from January to February**



**Nearly 8 out of 10 cases** were not up to date on their COVID vaccine



**12.7%** of COVID cases were residents or staff from a long-term care facility.

**7 COVID hospitalizations** were reported in February.

**0 COVID deaths** occurred during the month of February.

**Influenza Flu Activity Summary**

Sandusky County Public Health (SCPH) tracks seasonal influenza activity on a weekly basis throughout the year. SCPH monitors circulating flu issues and other related data sources and provides summaries of influenza activity from October (Week 40) through May (Week 20). The first week of the new calendar year is indicated by "Week 1." The following report is for flu activity beginning Week 49 (December 3<sup>rd</sup>) and ending Week 52 (December 30<sup>th</sup>).

7 positive Influenza A flu tests were reported from **long term care facilities** between Week 6-9

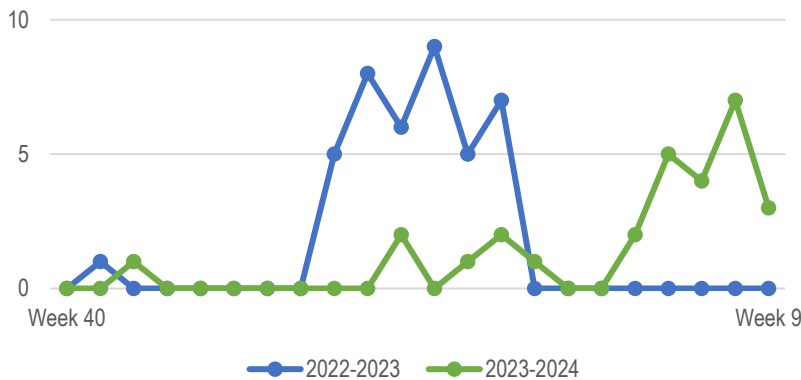
19 influenza associated hospitalizations were reported between Week 6-9.

17 were for **Influenza A**

2 were for **Influenza B**

**Median Age:** 65 years old

Influenza Associated Hospitalizations **peaked later this flu season** compared to last season

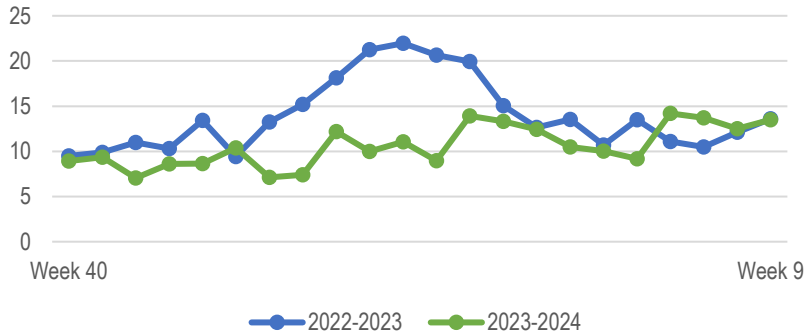


**Health Conditions Among Hospitalized Flu Cases**

(Week 6-9)

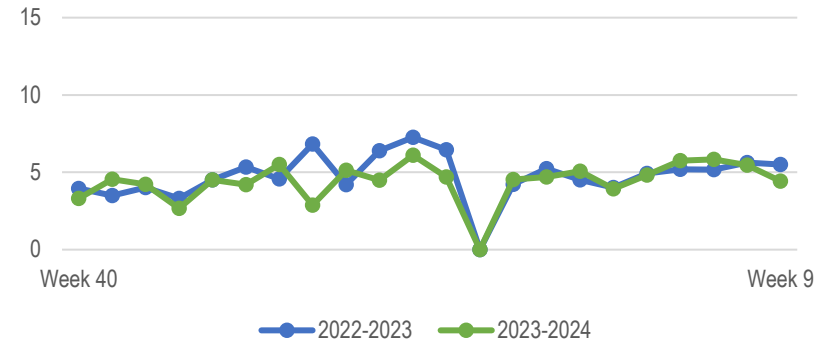
Respiratory Disorder	2
Heart, Kidney, or Metabolic Disorder	4
Pregnant	2
Immunosuppressed	1
Multiple Underlying Conditions	5
None	2
Unknown	3

Influenza Like Illness (ILI) ED visits **slightly higher this flu season** between Week 6-9 compared to last flu season



School absenteeism rates remain **comparable** to last flu season

% of students absent due to illness



\*Local school districts were not in session during week 52

**Data Sources:**

*Epi Center, IMPACTSIIS, Northwest Ohio Hospitals, Ohio Disease Reporting System (ODRS), Sandusky County School Districts (voluntary), Sandusky County Long-Term Care Facilities, Physician Offices, and Urgent Cares (voluntary)*